
Use
ENSIGN
LUKOS or
ULTRACHROME
Films
for **BEST RESULTS**

SS 435



Page 2

FIG. 1.

INSTRUCTIONS FOR USING THE
ENSIGN DOUBLE-8
CAMERA

ENSIGN, LIMITED
L O N D O N

The Ensign Double-8 takes 16 pictures on the standard size 27 (V.P.) spool. It is fitted with a 2" ENSAR F/4.5 Anastigmat lens with fingertip focussing of the front cell down to 3 feet and engraved for all necessary distances to infinity (see Fig. 1). The iris diaphragm is very simple in operation and conveniently placed, giving F/4.5, F/5.6, F/8, F/11, F/16.

Page 3

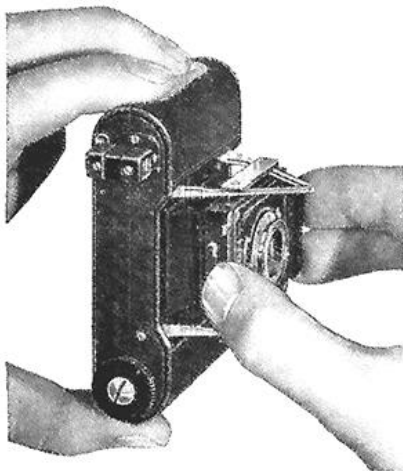


FIG. 2.

Page 4

Hold the camera by the two ends in the thumb and fingers of one hand, grasp the centre portion with the other and pull out (Fig. 2). The front locks in the ends of the four struts.

Turn the optical direct vision view finder into an upright position on the body, which is its correct position for upright or horizontal pictures.

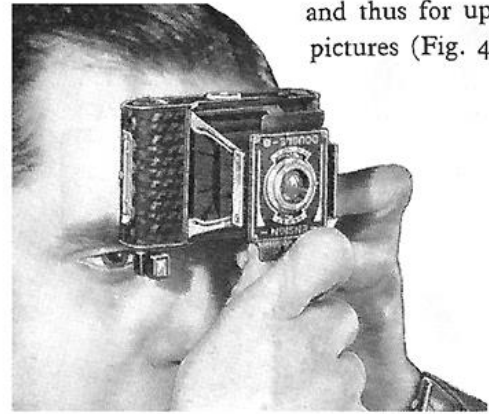
**THE VIEW FINDER SHOULD ALWAYS BE
TURNED UP WHEN AN EXPOSURE IS
BEING MADE**

Page 5



The camera is held thus for landscape pictures (Fig. 3)

FIG. 3



and thus for upright pictures (Fig. 4).

FIG. 4.

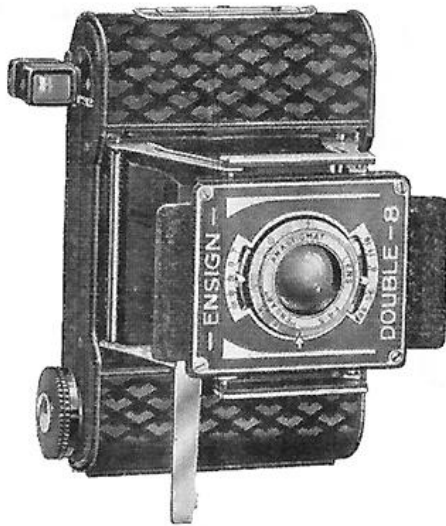


FIG. 5.

SHUTTER SPEEDS

The camera has a shutter with settings for three instantaneous speeds, $1/25$ th, $1/50$ th, and $1/100$ th second, also Bulb and Time.

The trigger is just behind the lens front on the right side, where it is well protected from accidental operation. Here is situated also the leg for standing the camera erect when making a landscape time exposure (Fig. 5).

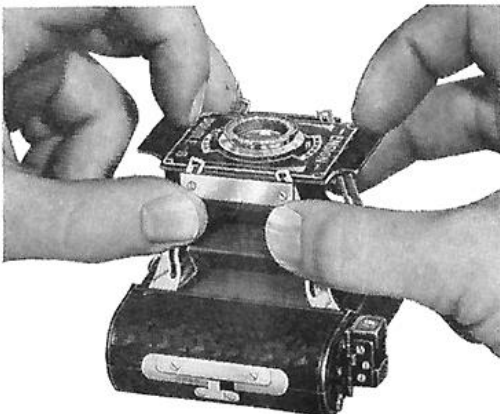
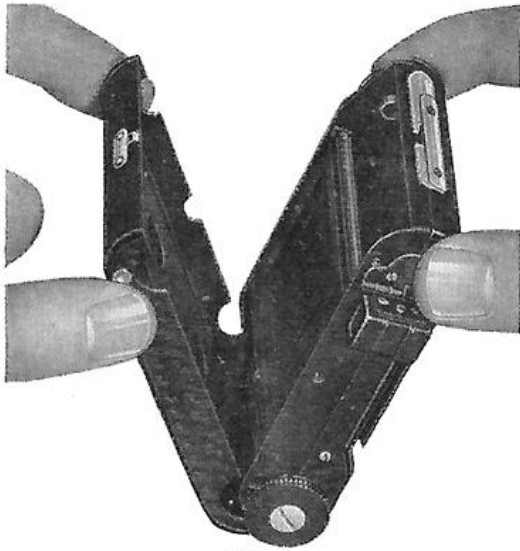


FIG. 6.

WHEN CLOSING THE CAMERA care is necessary in order to avoid pressing the bellows folds in; hold the four struts with the thumbs and SECOND fingers of both hands, thus leaving the forefingers free to press on the front, whilst a slight OUTWARD pressure is given to the strut (Fig. 6) until the front is free.

TO OPEN THE HINGED BACK, slide the top catch, and open the back by grasping it just below the finder (Fig. 7).



Page 12

FIG. 7.

LOADING

Both spool pivots, on the opposite side to the winder, spring outwards and thereby provide sufficient space for the spool to be inserted and removed.

When loading, place the spool in the chamber opposite the winder with its end in the spring pivot, press it outwards and downwards until the other end of the spool springs into the fixed pivot (Fig. 8). Break the seal of the spool and lead the pointed end of the paper across the rollers to the other end and insert it in the large side of the slot in the spool.

Give the winder two or three turns and close the back (Fig. 9).

Continue to wind until the "hand" or No. 1 appears in the first window.

Page 13

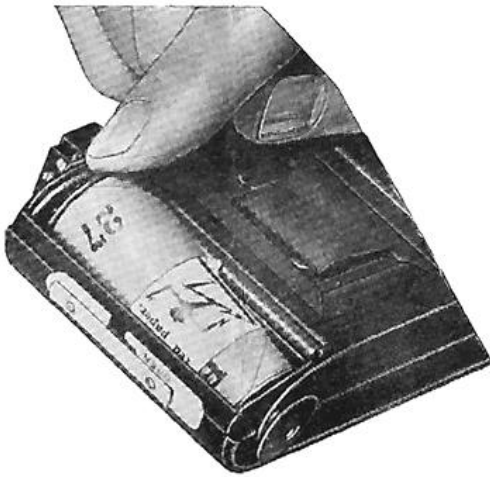


FIG. 8.

Page 14

TO MAKE AN EXPOSURE

Set the stop to the required position and place the shutter setting lever at the required speed.

See that the lens is focussed to the correct distance.

Hold the camera to the eye as already described and, taking care to hold it very steadily, press down the shutter release with the first finger.

WINDING THE FILM

After exposure wind the number to the second window.

Important—An exposure should be made with each number at each window

Page 15



FIG. 9.

Page 16

After completing the sixteenth exposure, wind film completely off, then remove the back and seal film with the "EXPOSED" label.

Remove the spool, transfer empty bobbin from bottom chamber to top and the camera is ready for re-loading.

CAUTION.—Do not wind spool with the camera closed: there is a risk of scratching the film on the back of the bellows.

Page 17

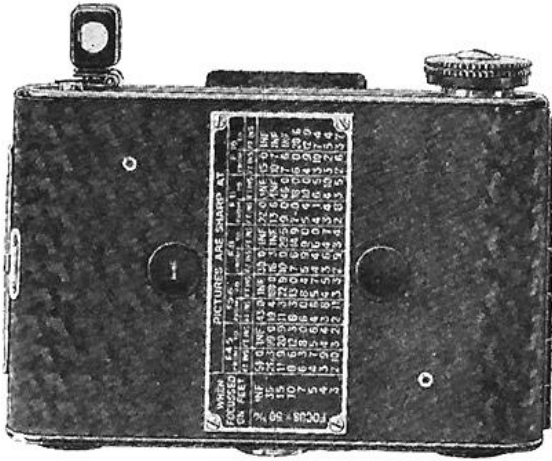


FIG. 10.

EXPOSURE TABLE

The following table gives a rough idea of the exposures for various subjects and stops, with most popular fast films (not super speed), in midday sunshine in May, June and July.

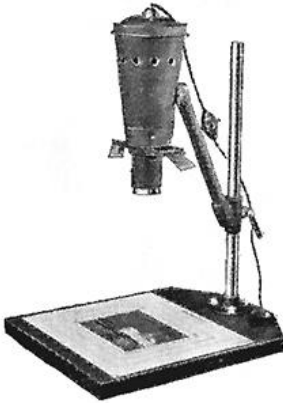
| Type of Subject | f/4.5 | f/6.3 | f/8 | f/11 | f/16 |
|--|-------|-------|--------|-------|-------|
| Average Objects in Fore-ground. Streets, Outdoor Figures | 1/400 | 1/200 | 1/100 | 1/50 | 1/25 |
| Landscapes with Light Foreground. River and Beach | 1/800 | 1/400 | 1/200 | 1/100 | 1/50 |
| Sea, Clouds and Sky .. | — | — | 1/1000 | 1/600 | 1/300 |
| Heavy Foregrounds, e.g., Dark Trees, Doorways, Groups | 1/200 | 1/100 | 1/60 | 1/30 | 1/15 |
| Under Trees, Woods .. | 1/30 | 1/15 | 1/10 | 1/5 | 1/2 |
| Portrait in Average Well-lighted Room | 1/15 | 1/8 | 1/4 | 1/2 | 1 |

ENLARGE YOUR PICTURES

WITH THE

ENSIGN MINIATURE MAGNAPRINT

Super-Speed Condenser Enlarger



The "Magnaprint" gives you super speed, without the slightest loss of quality. This is mainly due to the perfect optical and illuminating system employed, whereby a light diffused at its source and requiring no adjustment is concentrated on the lens by a powerful condenser. Fitted with ENSAR f.6.3 Enlarging Anastigmat. Enlarges up to 15 x 12.

PRICES (without lamps) £4 10 0

THE ENSIGN DAYLIGHT ENLARGING PRINTER

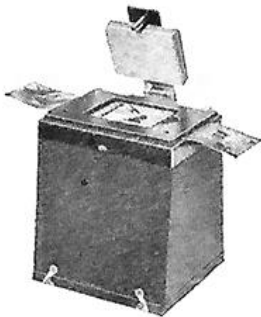


For making standard 3½ x 2½ prints from Ensign Midget negatives. Exceedingly simple to handle, no more knowledge being required than for printing with an ordinary printing frame.

Price 17/6

FOR MAKING QUICK "CONTACTS"

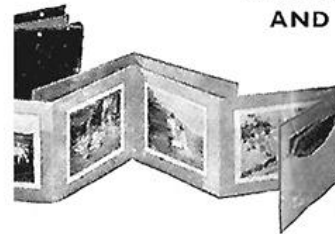
THE ENSIGN ELECTRIC PRINTING BOX



Prints contact prints from Ensign Midget strip negatives. Fitted with electric battery and accurately positioned bulb to give even illumination.

Price, with bulb and battery .. 10/6

ENSIGN MIDGET ALBUM AND NEGATIVE FILE



The "Print-Neg" enables the pictures to be attractively displayed, and is provided with a pocket behind each picture to hold its negative. Each Album holds six pictures and six negatives.



| | Each | Book file for 6 |
|---|------|-----------------|
| No. 3012 with Prairie Card Cover | 1½d. | 1/- |
| No. 3013 with Leather Cloth Cover | 3d. | 2/- |
| To take 8 standard Midget prints 3½ x 2½ :- | | |
| No. 3014 with Prairie Card Cover | 3d. | 2.- |
| No. 3015 with Imitation Leather Cover | 4½d. | 3.- |